



Universal 1" Antenna Mount Instructions and Owners Manual

Fishmaster, Inc.
www.Fishmaster.com
Support@Fishmaster.com

Phone: 877-777-8693
Fax: 877-437-6210

THANK YOU FOR YOUR BUSINESS. IF YOU ARE NOT COMPLETELY SATISFIED IN ANY WAY WITH YOUR UNIVERSAL 1" ANTENNA MOUNT, PLEASE CONTACT US. Our entire purpose as a company is to offer great products at affordable prices that our customers love.

Please take a few minutes to read the installation instructions and become familiar with the UNIVERSAL 1" ANTENNA MOUNT installation before beginning to ensure a high quality, trouble free installation and use. If you have any questions during your installation give us a call at 877-777-8693 or e-mail Support@Fishmaster.com

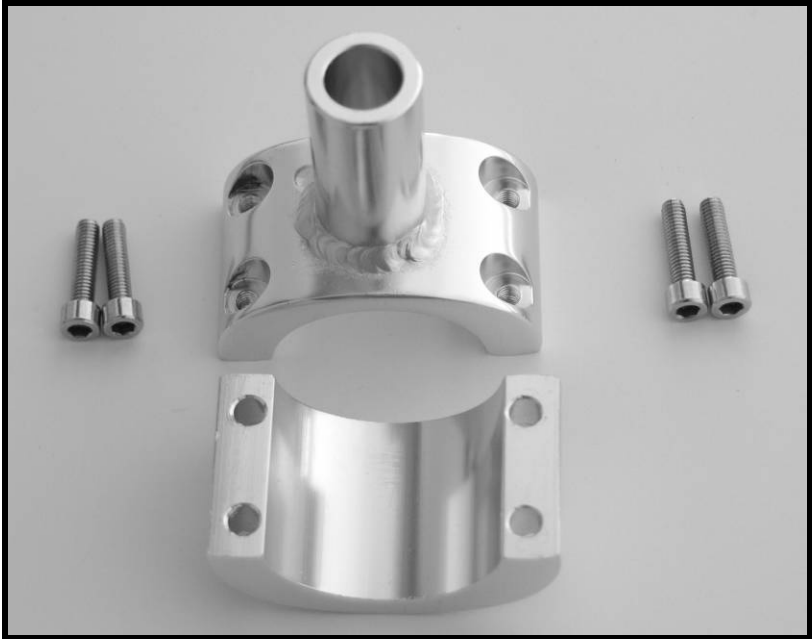
IMPORTANT NOTES ON INSTALLING AND USING YOUR UNIVERSAL 1" ANTENNA MOUNT

- Read entire manual before installation
- Grease all bolts
- Check bolts after first few uses and retighten when needed

Fishmaster, Inc Warranty

Fishmaster warrants this product against manufactures defects for a period of five (5) years. Anodized surfaces are specifically excluded, as their care and use cannot be controlled by the manufacturer. Any modifications or improper use, not approved in writing by Fishmaster shall void this warranty. Fishmaster is not responsible for personal injury or damage to the boat caused by the use of this product. Fishmaster's obligation under this warranty shall not include any transportation charges or costs of installation or any liability for direct, indirect or consequential damages resulting from delay or improper installation. If you need to make a warranty claim contact Fishmaster at 877-777-Tower to receive a return authorization number which is required for all claims. Defects must be reported within 30 days of discovery.

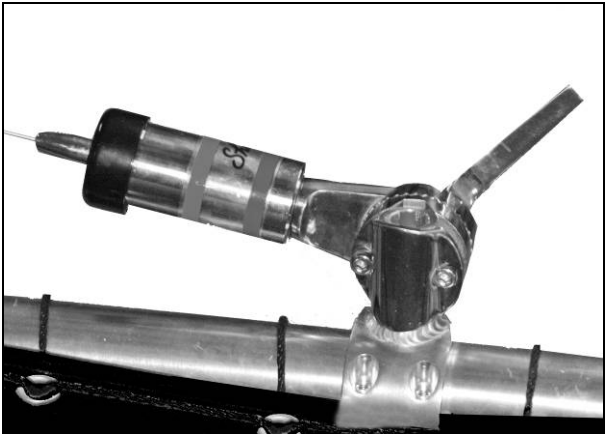
Fishmaster Universal 1" Antenna Mount Parts List



Item	Description
Universal 1" Mount	Used to attach 1 inch accessories to the T-Top
M6 X25 Socket Head Cap Screws	Used to attach 1" Mount to the rail of the T-top



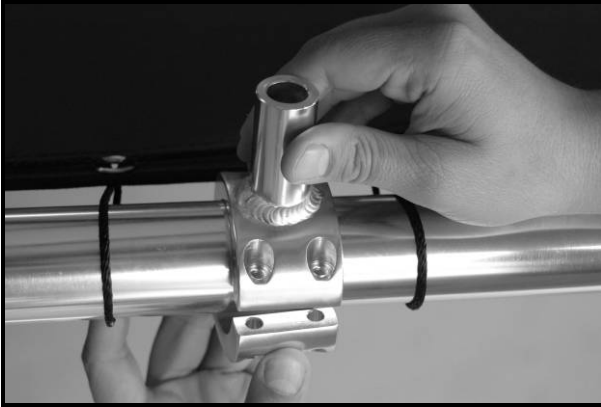
Universal 1" Antenna Mount on T-Top



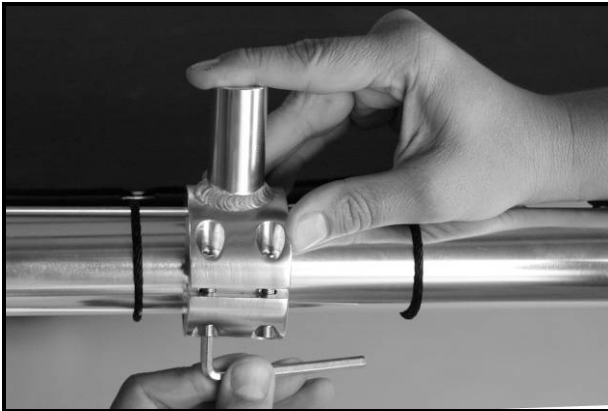
Universal 1" Antenna Mount with Antenna Mounted

INSTALLATION

1. Determine where you will install your 1" Antenna Mounting Bracket .
2. Put top section with post onto top of rail. Put bottom bracket underneath rail matching up the holes.



3. Insert socket head bolts and tighten.



4. Attach your favorite 1" mountable accessory.

